

Signature Structures Presents: The Re-Skin

Inspection | Design Review | Fabrication | Installation | Warranty



312 East Broad Street | Bethlehem, PA
(610) 882-9030 | Info@SignatureStructure.net
www.SignatureStructuresHome.com

The Signature Re-skin turnkey approach begins with an inspection & design review followed by fabrication & construction to complete a new membrane roof system for existing tensioned membrane structures. Our experience has quickly led us to be the most successful company in the fabric structure industry specializing in fabric replacement on structures not originally designed by us. Having a comprehensive understanding of tension roof systems, we specialize in value engineering the most economical and operational solutions for our clients. Signature has completed more custom tension roof membrane replacements than anyone else in the industry.

Signature has a satisfaction and customer service rating second to none in the industry (testimonials available)!



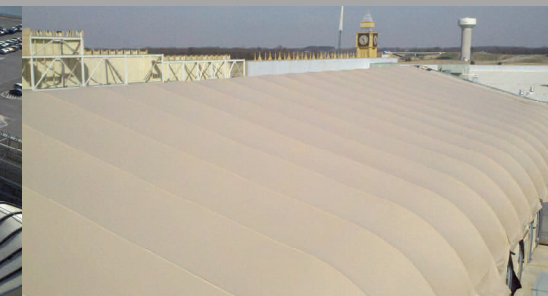
Signature has engineers and project managers specializing in various tensioned membrane systems!



Signature specializes in custom construction methodology to allow for the most cost effective installation!



Signature understands the importance of daily operations and works with clients to minimize operational impact!



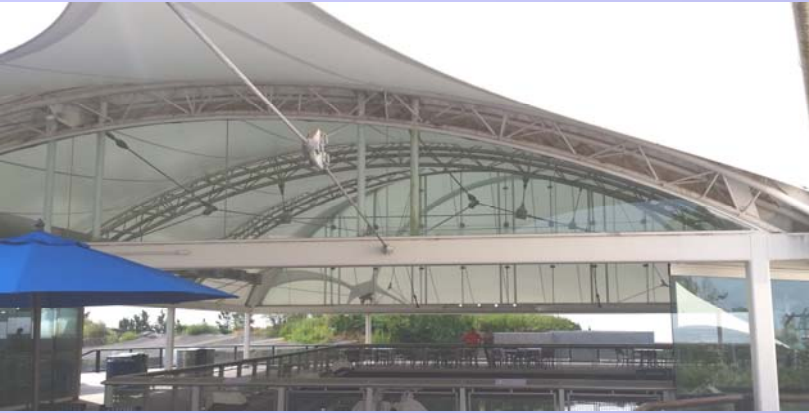
Design

Material

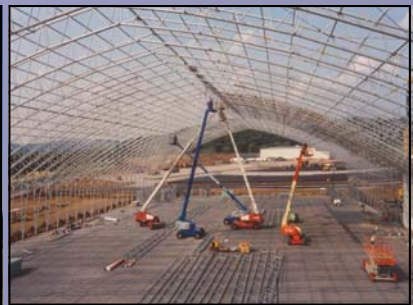
Service

Construction

Management



Providing high quality designed & customized tension, frame and tensile membrane solutions to new clients and existing building owners



Construction Services

All Reskin & Retrofitting

Completed & Revitalized



Any manufacturer, any material, all to specification with Signature's Warranty Program



Construction Management & A Design-Build Team

Signature offers construction management services ranging from structure design and installation to complete turnkey solutions. Project Management packages can include but are not limited to soil analysis, surveying, civil and electrical work, and custom integration.

Signature can perform a variety of enhancing and aesthetic repairs and services that add immediate visual beauty as well as long term performance benefits for our clients that own a tension or tensile membrane structure.

Annual Maintenance Services

include, but are not limited to

- Inspection
- Minor Membrane Repair
- Structural Tensioning
- Exterior Washing
- Warranty of Work Performed

Retrofit and Refurbish Services

include, but are not limited to

- Membrane Replacement
- Entrance Ways
- Lighting Plans
- Electrical & Mechanical Upgrades
- Insulation & Cavity Ventilation
- Structural Expansion
- Interior Build-out
- Relocation
- Warranty of Work Performed

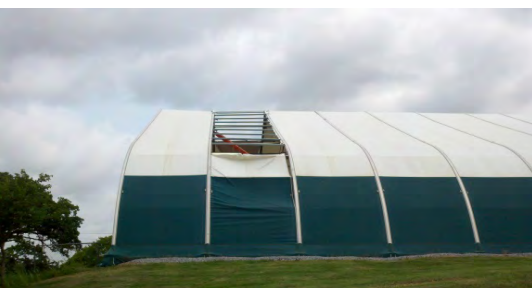
Code Compliance Services

include, but are not limited to

- Structural Analysis
- Cost Conscious Compliance Solutions
- Increased Collateral Load Capabilities
- Revised Calculations and P.E. Stamped Drawings

We lead the industry in roof replacement systems, utilizing our structure experience and industry knowledge to complete membrane roof replacement in both cost effective and site specific methodologies. Signature Structures can add a new roof to any fabric structure. As with any roof system, wear and tear, age or weather may result in a requirement for a partial or complete replacement. Signature Structures will bring a team of experts to your location and provide a structural inspection and analysis to review your projects roof replacement. We specialize in all tensile and tension membrane systems and bring experience, references and a team of experts affluent with multiple manufacturer's systems.

Complete Membrane Roof Replacement on structures by any manufacturer with any membrane specification complete with a new warranty program





Signature Structures offers:

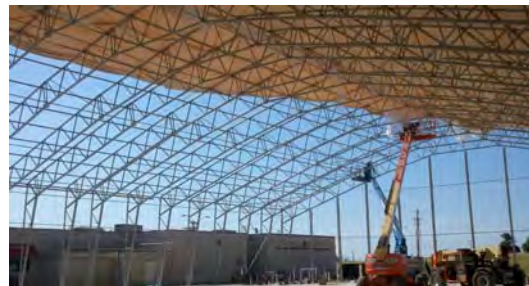
- Inspections, repairs, tensioning & annual general maintenance visits
- Cable & Turn buckle replacement & redesign (prevent sags and fabric wear)
- Modernization of aging technology - new membrane plates and tensioning systems
- Complete membrane roof replacement with attachment and tie down design
- Structural reinforcement and compliance inspections



- Design additions & engineering certification
- System redesign, retrofit & construction services
- An insured, warranted & revitalized structure system

Focus on Construction:

Membrane Installation Sequence with Large Roof Sheet Design *Contact Signature for additional "Focus on..." picture narratives to learn more about design & construction tension/tensile membrane industry*



Design

Material

Service

Construction

Management



The Signature Difference

From the moment you call Signature

- *Informative & Experienced Sales Consultants*
- *Technical Analysis & Project Review*
- *Engineering and Design Services*
- *Quality Control & Management*

Through Design Review & Fabrication

- *Steel Framework*

Only the highest quality 1st class heavy gauge structural steel is used in our buildings. Operations are governed by an ISO-9001 certified quality system. And each design is engineered and built to specific local code requirements without exception.

- *Coating Protection*

All structural steel receives a comprehensive surface treatment finished after fabrication. This method equally covers all surfaces of the steel, both inside and out. Based on the project we may use hot dipped galvanization, specialized Tnemec 3 coat or an industrial powder coating process. Our complete coating coverage after production ensures a long-term quality and warranty.

- *Membrane*

Signature utilizes a wide variety of membrane and roof options based on the specific requirement. The cover material used is fully recyclable. The strength and color of the fabric is customized for each projects specifications. Signature utilizes a Polyvinyl Chloride (PVC) membrane, a fire retardant/self-extinguishing and self-cleaning fabric that passes NFPA701 and ASTM E84 Fire Codes. Also available are specialty covers, PTFE, Steel mesh, ETFE that allow incredible architectural shaping & design.



When we arrive at your project site and after we leave

- *Construction Management and Design/Build Capabilities*
 - *Supply Chain Management*
 - *Logistics & Sub Contractor Coordination*
 - *Warranty*
- Signature offers a comprehensive & inclusive complete warranty programs.
- *After Sales Support and Maintenance Services*

Signature offers a service and maintenance and partner programs to all fabric building owners. We have successfully refurbished membrane structures from other manufacturers. If you experience less than satisfactory results with other companies we maybe able to help re-new your building, aid in heat loss or condensation issues, membrane replacement or relocation. We offer lucrative programs for membrane structure owners to join our team and have references that can attest to professionalism and responsiveness.

Your project will be handled and executed positively, professionally and successfully...

Each step of the way with the

The Signature Difference

www.SignatureStructuresHome.com

312 E. Broad Street, Bethlehem, PA 18018

(P) 610.882.9030 (F) 610.882.9040

KickingBird Tennis Center Upgrade

Background

Having been a long time customer of Signature Structures, the City of Edmond, OK contracted the Signature Team to reskin the existing tennis facility that had been originally built by another manufacturer. Over the years, Signature has inspected and fixed many issues with the building. When it came time for the membrane upgrade, Signature was the only choice.

The Signature Team has developed a new method to replace the end walls that allow cost reductions with a site having limited and difficult access. Signature is proud to have the City of Edmond as a long term, annual client that sees firsthand the Signature Difference™.

Solution

The Signature Team designed and manufactured an exterior membrane panel integrating Eco Foil Technology™ to increase the insulating quality of structure. The new membrane was then installed over the existing roof to eliminate the need to detention and remove hanging accessories such as lights, heaters and netting; and allowing the club to operate during the set up and demobilization. The club experienced minimal downtime as the courts were closed only when Signature worked immediately overtop of them. The installation method reduced the construction time, allowed camps to continue operation and ultimately cut construction cost in half.

Details

The existing structure spans 118x181' covering a 4 court tennis facility. The building site sits on top of a hill and is exposed to high winds. Years of neglect caused the structure to detension naturally putting undue stress on the membrane and aluminum frame. Consequently, there were cracks in the frame that had to be addressed. Signature designed custom brackets to reinforce the frame and prevent new frame damage. This was done with our engineering to ensure structure code compliance in such an extreme weather location.

Once the frame was addressed, a new Ferrari 602 white and green roof sheet was installed. The roof sheet was designed in large panels to eliminate the traditional multiple panel system commonly associated with leaking.



The Aronimink Country Club Tennis Center

Background

After nearly 20 years, the tennis club at Aronimink Country Club realized that it was time for an overhaul and revitalization of their premiere tennis facility overlooking the picturesque club and course. They had originally had a Ferrari 502 membrane, that had significantly exceeded its warranty and lifespan and the repairs and maintenance of the facility were starting to become an everyday occurrence. The facility was used by members, amateur and professional players and all of them wanted to keep the enclosed courts and considered them the highlight and first booked for court time.

Solution

The Club did not want to let its members down and went out searching for a company with the ability to reskin the facility while striving for some unique and clever solutions. They wanted to keep extra costs and insurance rates minimized by not driving on, or having any potential damage or resurfacing of the existing courts. They wanted to have the ability to schedule events or play while the refurbishing and installation were taking place. They also asked how they could keep their existing infrastructure of lights, electrical, heating (HVAC) and fire protection in place...again avoiding costs, potential damage to surface and further elongating down time for their members and players. Signature Structures provided a customized, unique solution that captured all their requests like no one else could in the industry.

Details

The 118' x 132' structure was done by others originally, but Signature's design team and construction crew have had specialized experience within these style aluminum frame structures. Having recovered, and refurbished dozens as well as even built and supplied them ourselves, our experience allowed a first rate quality solution.

The Aronimink Club was very happy with the Ferrari Membrane product so Signature used a few grades higher than on the original, but unlike the old system, Signature design and manufactured a complete reskin cover that was over 180' x 132 and covered the entire facility with a color border, special attachments and solved another problem for the club, 100% elimination of water at the truss columns.

Signature has an engineered and custom 1 piece roof system that comes with a 100% warranty, a new and complete tensioning and tie down system and can be installed over the facility eliminating down time, further costs, costly protection and repairs or even a day of play time.

Customer Appreciation

The Club has been thrilled, and if you would like a tour or a reference, do not hesitate and please call or email us if you have any questions, 610.882.9030 or info@signaturestructures.net



New England Patriots Practice Facility

Background

The New England Patriots and Signature Structures worked together on a variety of projects and services. The Dana-Farber Field House, 250' x 350' Structure, utilized as an Indoor Practice Facility and Event Center, has been re certified and re covered in new end wall systems, replacing the older membrane. Signature has worked to ensure interior usage and privacy for their practice sessions, tryouts and professional use. Signature has maintained a long term annual maintenance of the facility to ensure its high end use and structural compliance exceed Massachusetts state code.

Solution

The Kraft Group entered into a long term contract with Signature to engineer, fabricate and support more than 100,000 square feet of custom designed structures. Providing engineering expertise, professional construction supervisors and crew members, design solutions and turn key supply of all materials, the end result is a long term win-win relationship. Signature plays an important role for professional teams and universities and the complete Gillette Stadium compound.

Details

Signature provides annual service and maintenance, design and engineering and complete turn key integration. We work to support standard upgrades and repairs for the Kraft Group and Gillette as well as roof, wall and system replacements. We have done energy analysis, provided multiple building systems and act as a consultant for a variety of departments working on site. Our goal is to remain long term partner with those working at 1 Gillette Way, offering a variety of good and services, backed with a Signature warranty and our proven track record of success.

We have helped transform structures from retail stores, to warehouse and storage facilities and then into office complexes for the Revolution sports team. Interior practices and exterior employee viewing areas have been added and we remain committed to the providing the best long term support to all the end users at the facility. Signature will bring the same support to all of our clients.

Customer Appreciation

Signature and The Kraft Group have a long standing relationship built on trust and respect. If you need a reference for the work performed or the capabilities of Signature we will be able to send you a reference letter and have someone from Gillette Stadium Facilities, The Kraft Group or from one of the professional sports teams call you to discuss how working with Signature has been. We have over 10 years of working relations and do annual service, inspection, new permanent and temporary facilities and act as a consultant when they need our area of expertise. Please call or email us if you have any questions, 610.882.9030 or info@signaturestructures.net

